

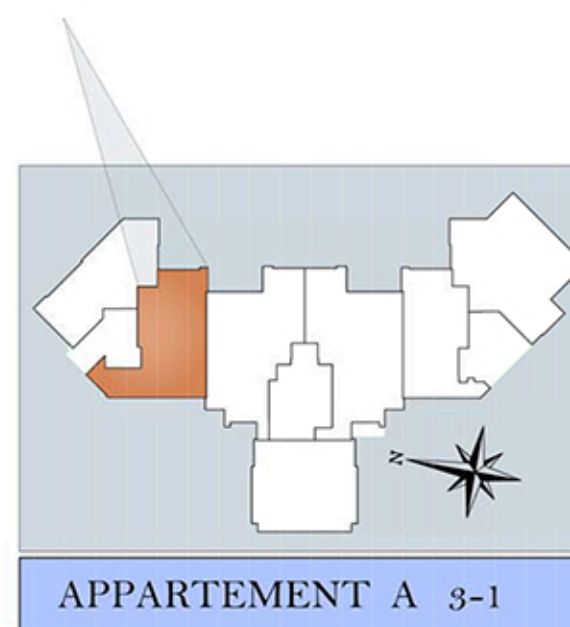


ASTORIA Immobilière

Adresse : Immeuble Le Boulevard Bloc C Rdc
 Les Berges du Lac II 1053 Tunis - Tunisie
 Tél. : +216 71 967 011, Fax : +216 71 967 010
 Mobile : +216 29 75 51 51



A.3.1



| BLOC | N° APPARTEMENT | TYPE | NIVEAU |
|---|----------------|-----------------------------|------------|
| A | A.3.1 | S+3 | 3eme ETAGE |
| DESIGNATION | | SURFACE APPROXIMATIVE (m²) | |
| SALON -SAM | | 28.40m² | |
| CHAMBRE PARENTS | | 17.40m² | |
| CHAMBRE 1 | | 14.00 m² | |
| CHAMBRE 2 | | 15.60 m² | |
| CHAMBRE SERVICE | | 3.30 m² | |
| CUISINE | | 14.50 m² | |
| S.D.B | | 7.00 m² | |
| S.D.E | | 4.50 m² | |
| HALL | | 12.00m² | |
| PLACARDS ET DRESSING | | 4.60m² | |
| COULOIR | | 2.10 m² | |
| SÉCHOIR | | 4.20 m² | |
| TÉRRASSES COUVERTES | | 10.50 m² | |
| SURFACE UTILE | | 138.10m² | |
| S.Murs et Cloisons Divers | | 32.40 m² | |
| SURFACE HORS OEUVRE | | 170.50 m² | |
| Quote part dans les parties communes | | 32.19 m² | |
| SURFACE TOTALE | | 202.69m² | |
| Plan provisoire modifiable selon contraintes techniques | | | |